

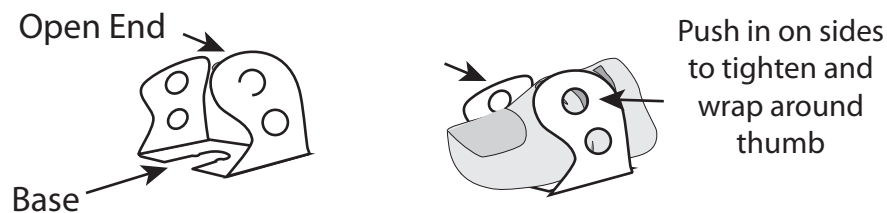


Thank you for purchasing miRing, the original ring device to assist in one-handed aspirations and injections. This novel and innovative device is unlike any other. With miRing, you gain confidence and control to become the aesthetic injector you always wanted to be.

To watch an instructional video, please visit us at www.miringusa.com.

SIZING miRing

miRing should be worn on the dominant injecting thumb. Position miRing with open end pointing upward as shown below. For proper fit adjust miRing before using with syringe.



To size, mold ring sides around thumb by holding miRing at the base and slightly pushing sides in to curve around thumb as shown above. miRing should fit loosely to allow room for syringe plunger head.

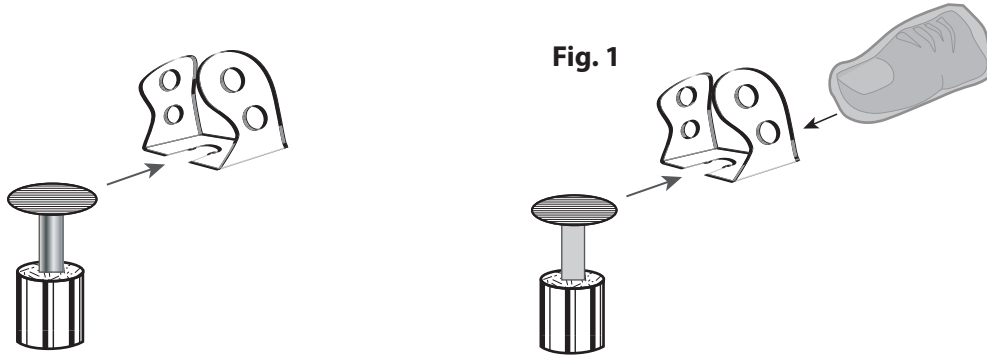
CLEANING AND CARING

miRing is jewelry grade sterling silver. Mild soap and warm water for regular cleanings. To disinfect miRing, wiped with alcohol, hibiclens or caviwipes. miRing is autoclavable but should not be heated to temperatures above 240° F. when polishing miRing, use a non-abrasive cloth to avoid scratching.

miRings with gem stones can be cleaned with jewelry grade cleaners.

USING miRing

1. Slide plunger head into slotted groove first, then slide miRing and syringe onto a gloved thumb. (see Fig. 1).



2. Push tightly onto thumb using the plunger shaft to ensure plunger head **stays fully seated to back of slotted groove** (see fig. 2).

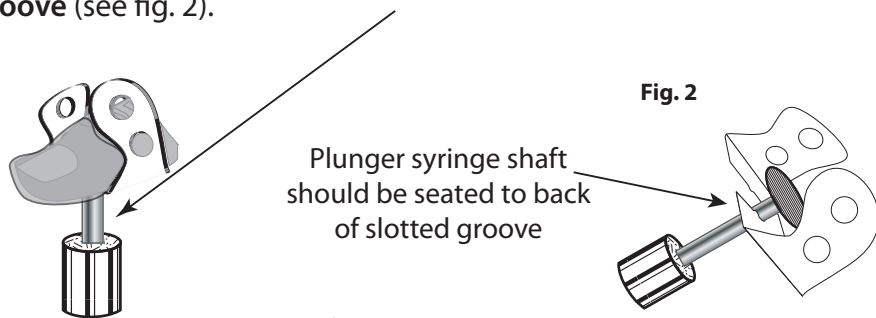
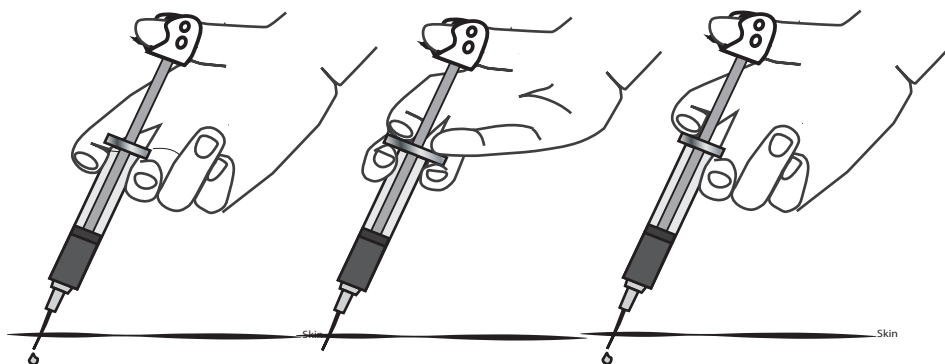


Fig. 3

Front view - shows proper fit

ALTERNATE FINGER GRIPS



Alternate finger grips: these options allow more control to pull back on plunger. Practice different options to find what works best for you. Please visit www.miringusa.com for a comprehensive "how to" video.